

Reliable exam torrent & valid VCE PDF materials & dumps torrent files

Input your exam code ...



Our high-quality valid VCE PDF materials & dumps torrent files guarantee you pass exam 100% for sure. Our reliable exam torrent will be the best help for your exams and will give you a new start, a new life.

All Products

Contact now



Quality and Value

VCETorrent Practice Exams are written to the highest standards of technical accuracy, using only certified subject matter experts and published authors for development - no all dumps.



Tested and Approved

We are committed to the process of vendor and third party approvals. We believe professionals and executives alike deserve the confidence of quality coverage these authorizations provide.



Easy to Pass

If you prepare for the exams using our VCETorrent testing engine, It is easy to succeed for all certifications in the first attempt. You don't have to deal with all dumps or any free torrent / rapidshare all stuff.



Try Before Buy

VCETorrent offers free demo of each product. You can check out the interface, question quality and usability of our practice exams before you decide to buy.

19728

CUSTOMERS

32727

DOWNLOADS

21728

TEAM MEMBERS

26394

SHARES

<http://www.vcetorrent.com>

Reliable exam torrent & valid VCE PDF materials & dumps torrent files

Exam : 70-448

Title : TS:MS SQL Server 2008.Business Intelligence Dev and Maintenanc

Vendors : Microsoft

Version : DEMO

1. You design a SQL Server 2008 Integration Services (SSIS) package. The package extracts data from flat files and loads this data to a SQL Server 2008 database.

The package contains two Boolean variables named @IsWeekday and @IsHoliday. When the package is executed on week days, the @IsWeekday variable is set to True. When the package is executed on holidays, the @IsHoliday variable is set to True. You need to implement the following business logic in the control flow of the package:

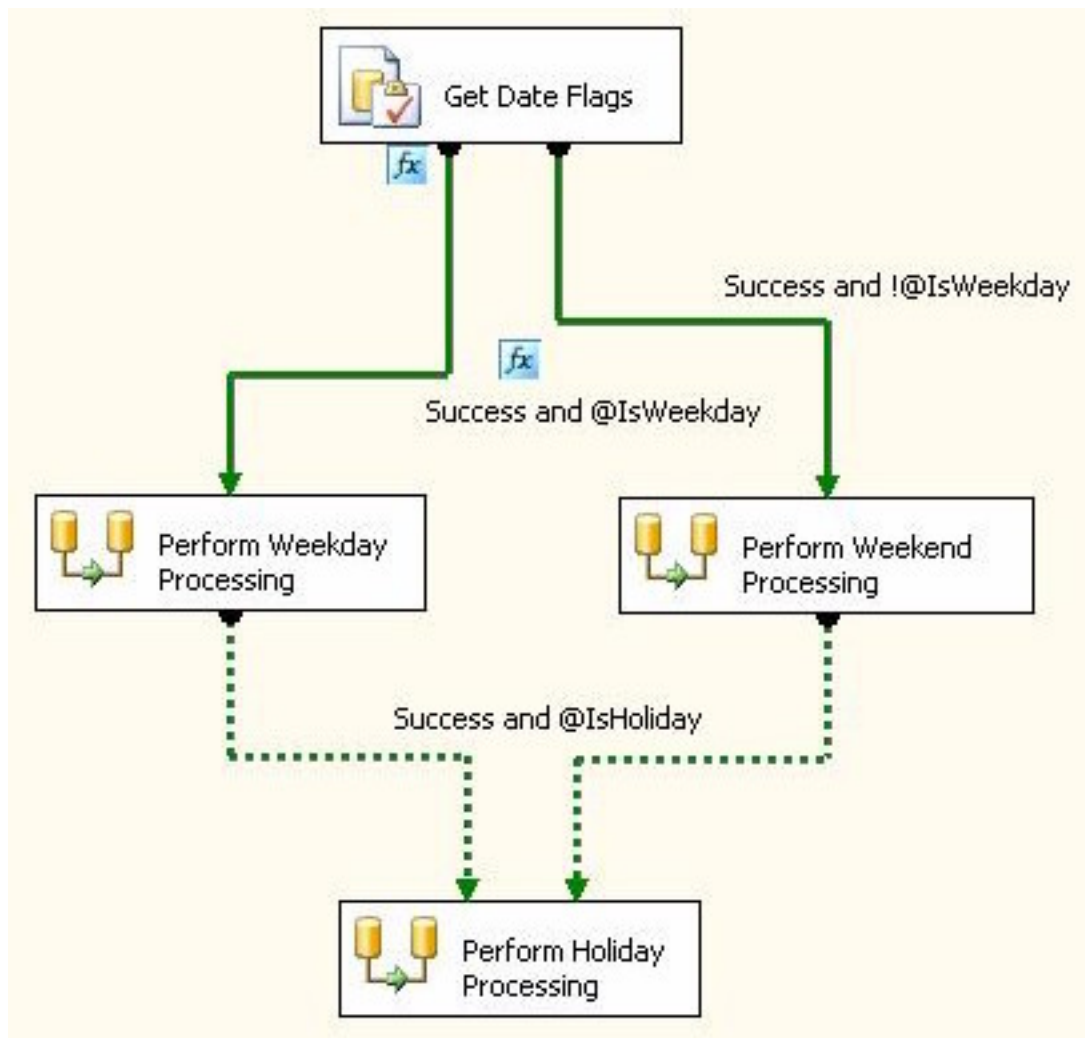
• When the @IsWeekday variable is set to True, the Perform Weekday Processing Data Flow task is executed.

• When the @IsWeekday variable is set to False, the Perform Weekend Processing Data Flow task is executed.

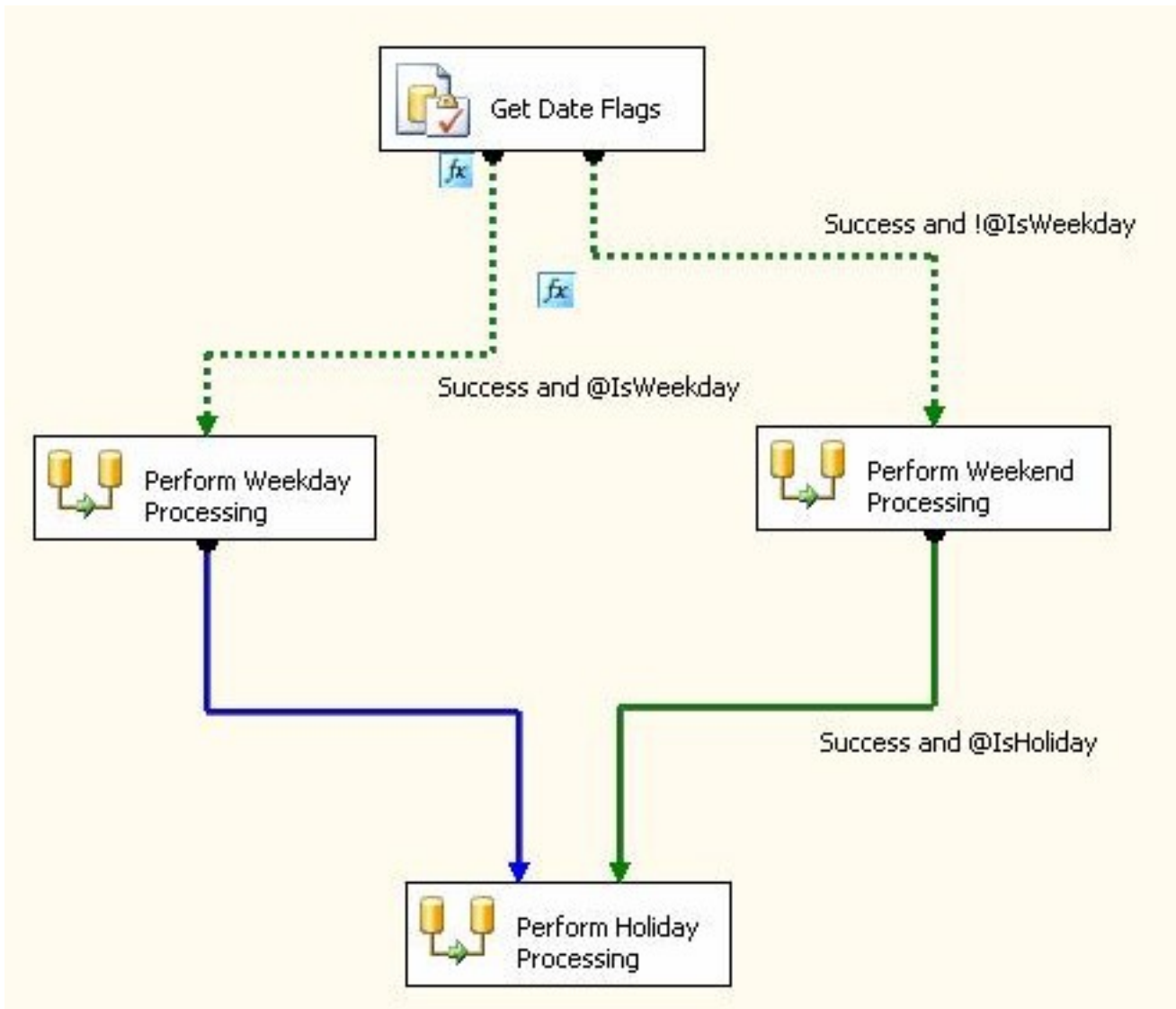
• When the @IsHoliday variable is set to True, the Perform Holiday Processing Data Flow task is executed.

Which control flow logic should you implement?

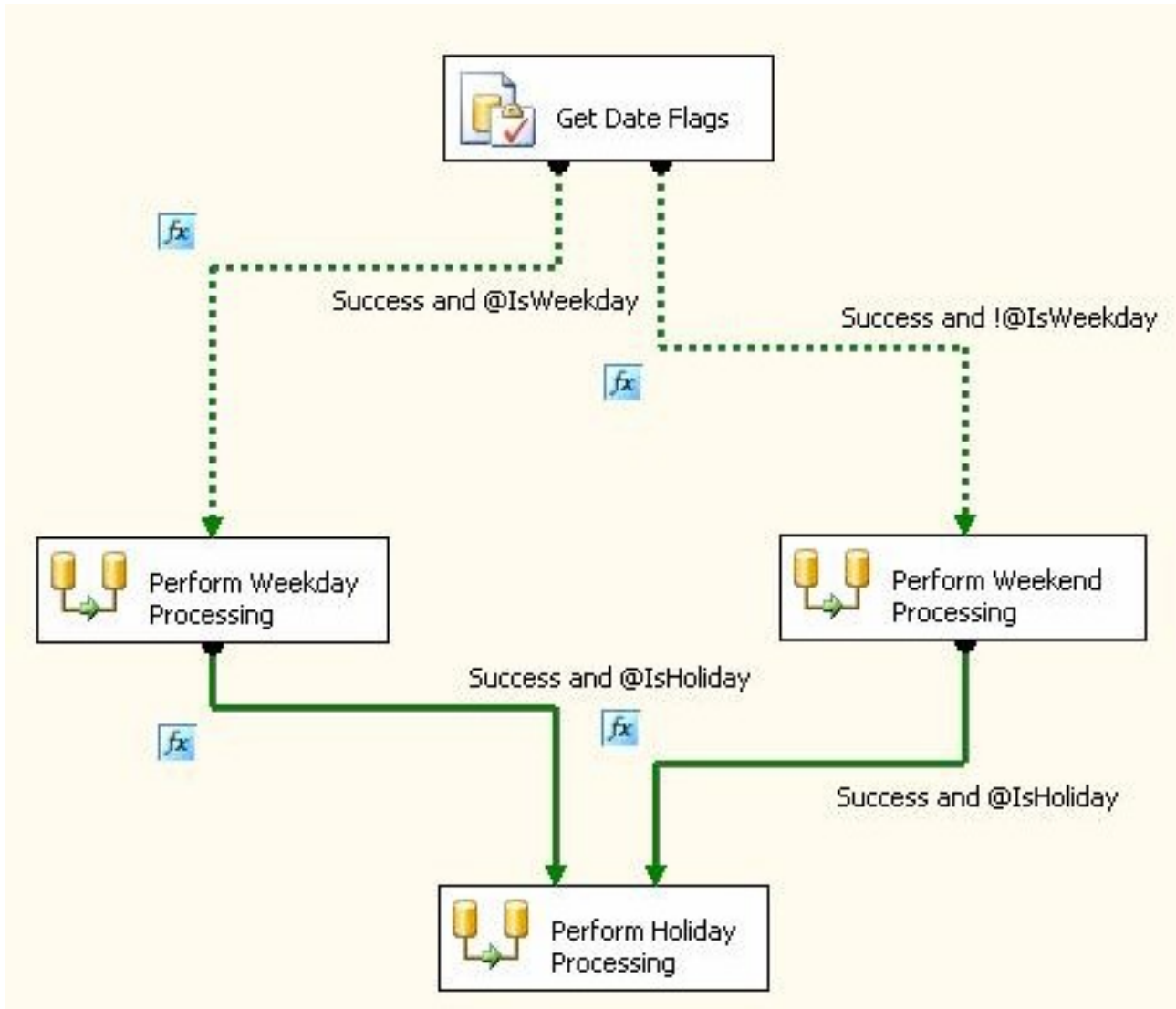
A.



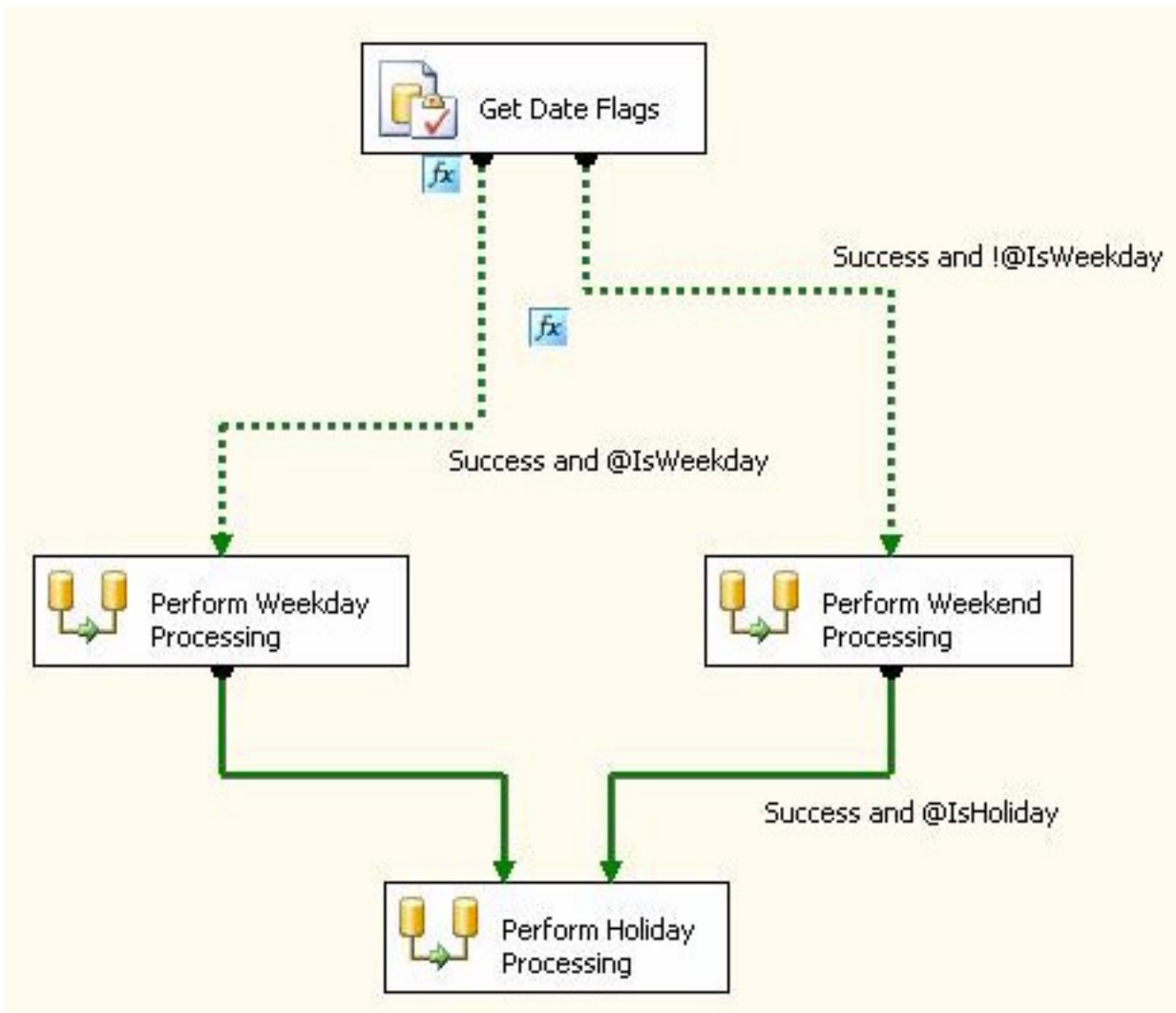
B.



C.



D.



Answer: A

2. You are developing a SQL Server 2008 Integration Services (SSIS) data flow that loads data to a SQL Server 2008 database.

You need to ensure that the data flow updates the existing records in the SQL Server database by using data from the rows in your data flow.

Which data flow component should you use?

- A. SQL Server Destination
- B. OLE DB Destination
- C. OLE DB Command Transformation
- D. Data Conversion Transformation

Answer: C

3. You design a SQL Server 2008 Integration Services (SSIS) package that contains several data flows.

You need to monitor the data that passes through each path in the data flow by using the Business Intelligence Development Studio. You also need to ensure that data flow logic is retained.

What should you do?

- A. Use the Data Viewer tool.

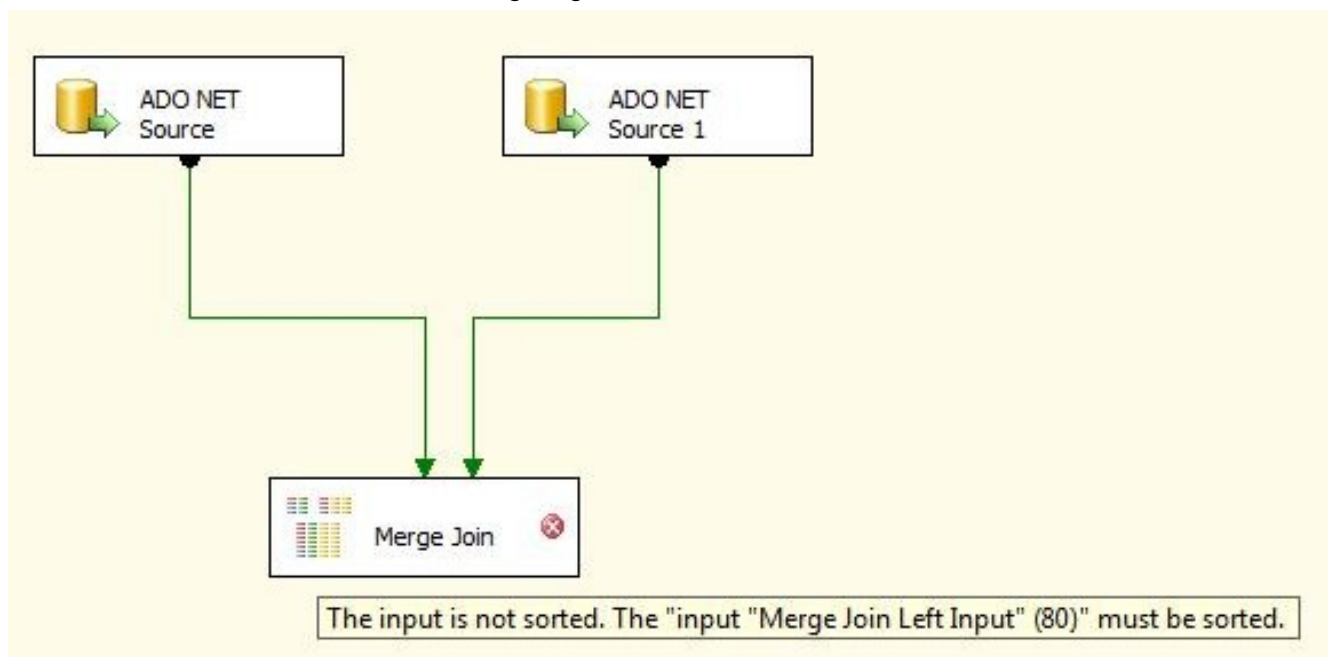
- B. Use the Data Profiling task.
- C. Use the Audit transformation.
- D. Use breakpoints in the Script component.

Answer: A

4. You are developing a SQL Server 2008 Integration Services (SSIS) data flow that extracts data from two sources.

Each source database is located on a different server. Each source is based on a SELECT statement that uses an ORDER BY clause.

The data flow is as shown in the following diagram.



When the paths from the two sources are connected to a Merge Join component, the following error message is displayed:

"Data Flow Task: The input is not sorted. The 'input "Merge Join Left Input" (80)' must be sorted."

You need to ensure that data from each query is included in each row in the data flow. You want to achieve this goal by using minimum amount of execution time.

What should you do?

- A. Add a Sort transformation for each data flow.
- B. Add an OLE DB Command transformation for each data flow.
- C. Update the sorting properties in each source component.
- D. Replace the Merge Join transformation with a Union All transformation.

Answer: C

5. You are designing a SQL Server 2008 Integration Services (SSIS) package. The package includes a Data Flow task that copies several million rows. The data flow requires a match against a reference table that contains 10,000 rows. Each row in the reference table will be used during the data flow. You need to ensure that the data flow executes in the minimum amount of time.

Which data flow component should you select?

- A. a Fuzzy Lookup transformation

- B. a Lookup transformation along with the Full cache option
- C. a Lookup transformation along with the No cache option
- D. a Lookup transformation along with the Partial cache option

Answer: B

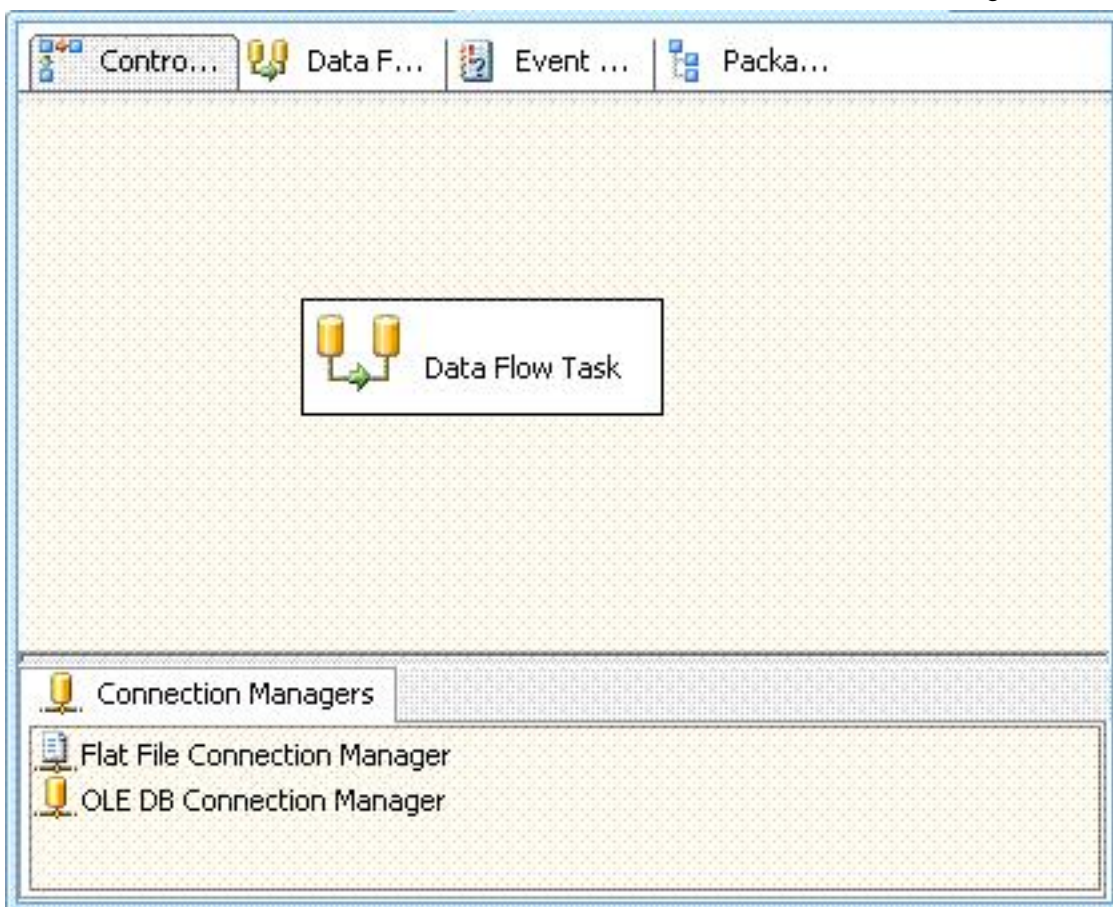
6. You design a SQL Server 2008 Integration Services (SSIS) data flow that inserts data from a source query to a destination table.

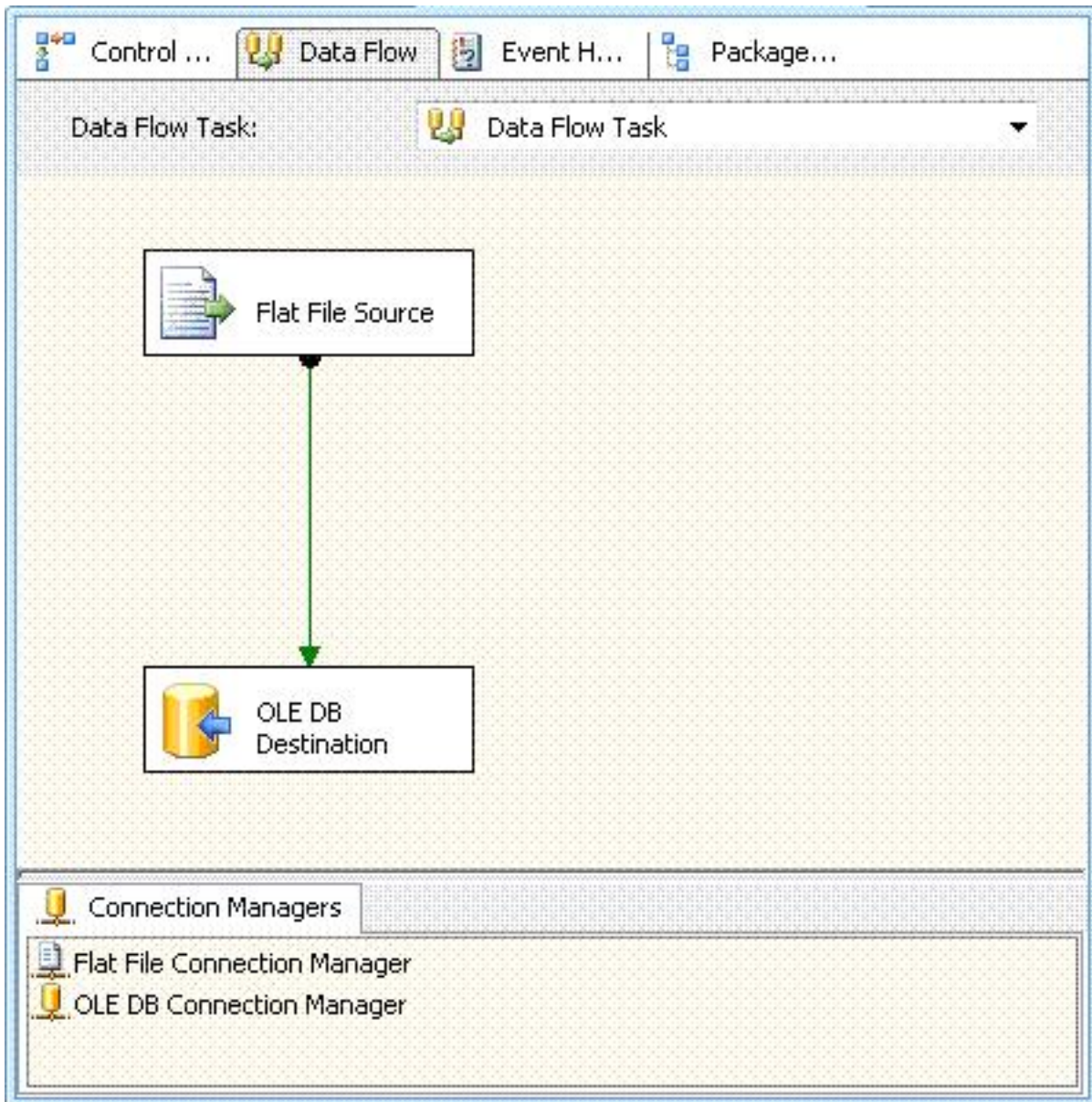
You need to insert only those rows that do not already exist in the destination table. What are two possible ways to achieve this goal? (Each correct answer presents a complete solution. Choose two.)

- A. Use the Merge transformation.
- B. Use the Lookup transformation.
- C. Use the Union All transformation.
- D. Use the Merge Join transformation.
- E. Use the Fuzzy Lookup transformation.
- F. Use the Fuzzy Grouping transformation.

Answer: BD

7. You modify a SQL Server 2008 Integration Services (SSIS) package. The package extracts data from a text file and loads this data to a SQL Server 2008 table as shown in the following two exhibits.





You need to update the package to extract data from multiple text files of the same directory. Which three actions should you perform? (Each correct answer presents part of the solution. Choose three.)

- A. Add a variable to the package.
- B. Add a variable to the data flow task.
- C. Add a Foreach Loop container to the package.
- D. Add a For Loop container to the package.
- E. Add an expression to the Flat File Source component.
- F. Add an expression to the Flat File connection manager.

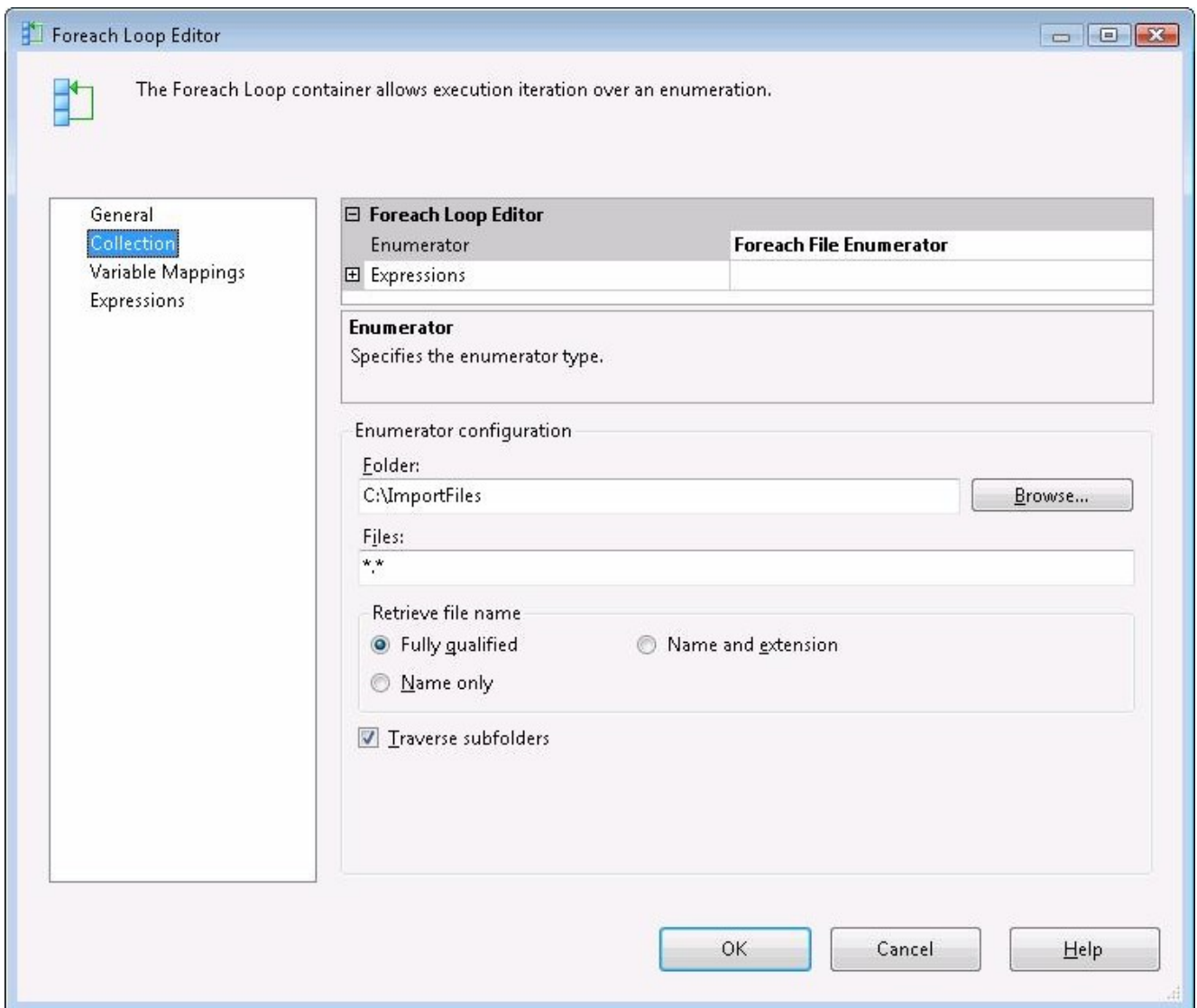
Answer: ACF

8. You implement a SQL Server 2008 Integration Services (SSIS) package.

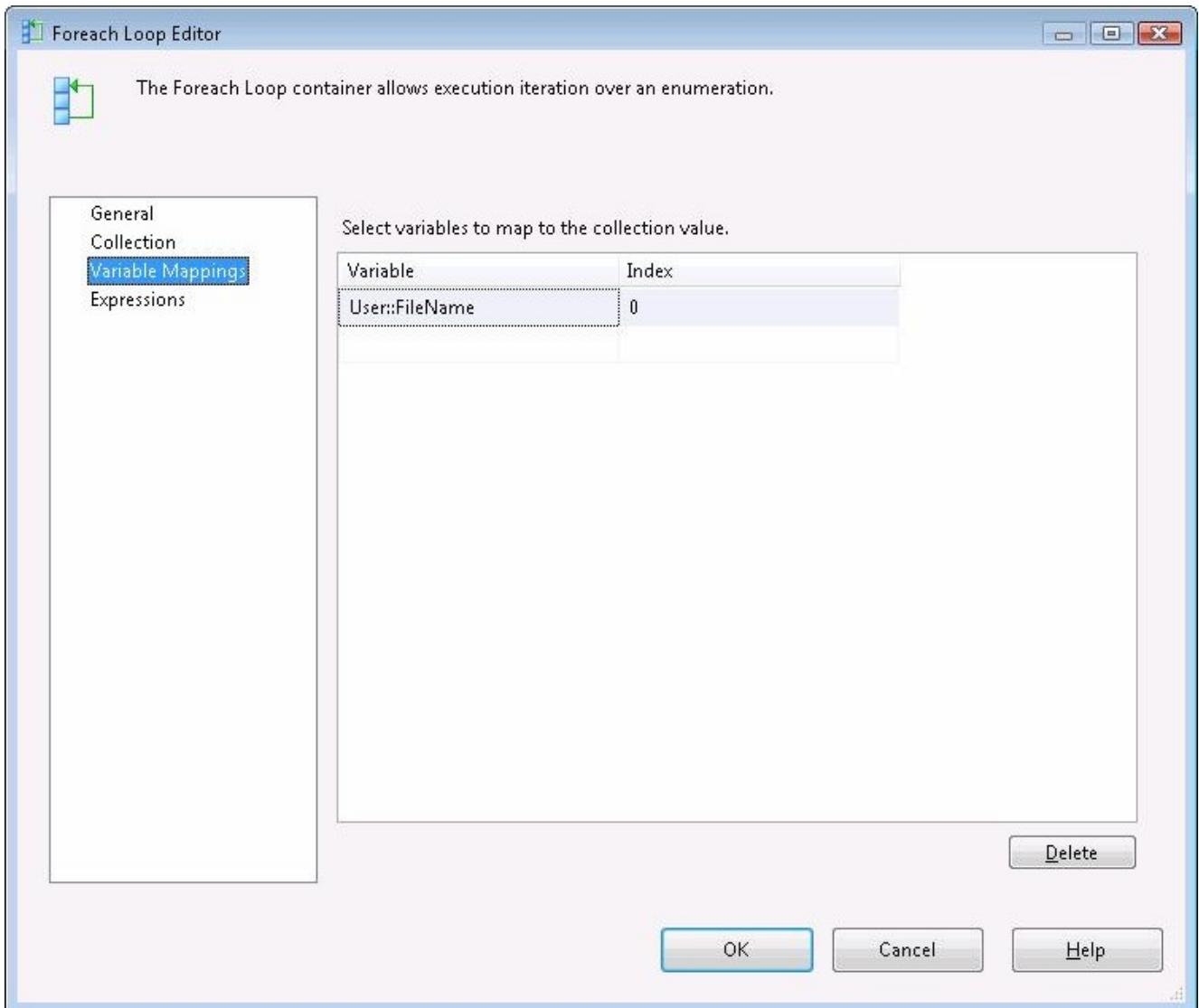
The package contains the following components:

▪ A Foreach Loop container for the Collection property as shown in the following exhibit. (Click the Exhibit

button.)



¶A Foreach Loop container for the Variable Mapping property as shown in the following exhibit. (Click the Exhibit button.)



¡A String variable named FileName

¡A String variable named DirectoryPath

You need to update the package so that the DirectoryPath variable returns the directory path for the file path stored in the FileName variable.

Which two actions should you perform? (Each correct answer presents part of the solution. Choose two.)

- A. Set the RaiseChangeEvent property of the User::FileName variable to True.
- B. Set the EvaluateAsExpression property of the User::DirectoryPath variable to True.
- C. Add a Script task to the OnPostExecute event handler of the Foreach Loop container.
- D. Set the Expression property of the User::DirectoryPath variable to the following expression.

SUBSTRING(@[User::FileName], 1, LEN(@[User::FileName]) -
FINDSTRING(REVERSE(@[User::FileName]), "\", 1))

E. Set the Expression property of the User::FileName variable to the following expression.

SUBSTRING(@[User::FileName], 1, LEN(@[User::FileName]) -
FINDSTRING(REVERSE(@[User::FileName]), "\", 1))

Answer: BD

9. You implement a SQL Server 2008 Integration Services (SSIS) package.

The package contains the following components:

- A data flow task contained in a For Loop container
- A Flat File destination component that uses a Flat File connection manager
- An OnError event handler

When an error occurs in the package, you plan to write diagnostic information from an expression that includes the version of the package to a text file.

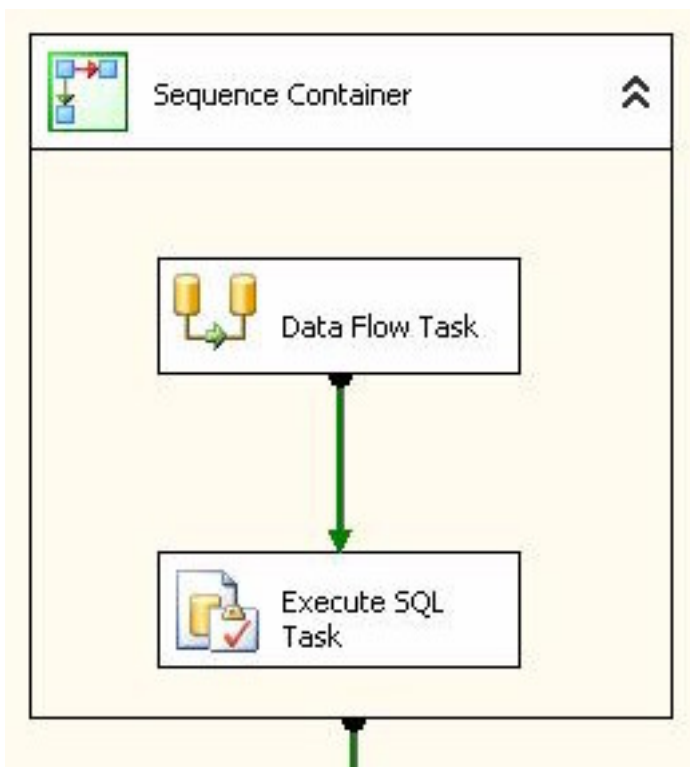
You need to ensure that the required information is written to the text file.

What should you do?

- A. Use the VersionGUID variable.
- B. Use the ExecutionGUID variable.
- C. Use the SourceID variable.
- D. Use the TaskID variable.

Answer: A

10. You develop a SQL Server 2008 Integration Services (SSIS) package. The structure of the package is as shown in the following exhibit.



You need to define a variable that contains sensitive information that is only available to the Sequence Container, the Data Flow Task, and the Execute SQL Task.

What should you do?

- A. Create the variable at the package scope.
- B. Create the variable at the Data Flow Task scope.
- C. Create the variable at the Execute SQL Task scope.
- D. Create the variable at the Sequence Container scope.

Answer: D